



Guldmann Inc.
 Tel. 800 664 8834
 Tel. 813 880 0619
 info@guldmann.net
 www.guldmann.net

GH3/GH3+ Lifting modules

Technical specifications

Weight and materials

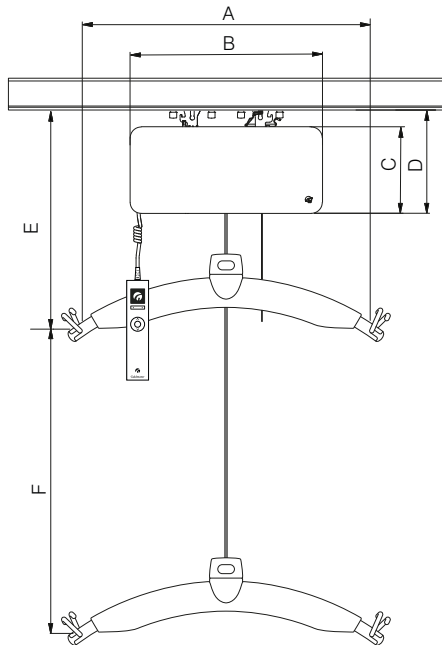
SWL	: 440 lbs, 550 lbs, 605 lbs
Own weight	: 21.1 lbs
with horizontal motor	: 23.1 lbs
with scale module	
and horizontal motor	: 24.5 lbs

SWL	: 660 lbs, 770 lbs, 825 lbs, 880 lbs
Own weight	: 31 lbs
with horizontal motor	: 35 lbs
with scale module	
and horizontal motor	: 38 lbs

Covers : Impact-resistant UL 94 V-0 flame retardant recyclable plastic

Dimensions

A	: 22 3/4"
B	: 13 1/2"
C	: 6 1/8"
D	: 7 1/4"
E, min.	: 16 3/4"
F	: 98"
Depth of hoist	: 8"



Functions

Operation	: Hand control / IR
Sound level	: 52 dB (A)
Horizontal speed	: 8.6 inch/sec. (Horizontal speed module)

Safety

Emergency stop	: Yes
Emergency lowering device	: Yes, mechanical and electrical
Control of lifting strap	: Yes
Cut-off angle	: 45° along the rail 10° across the rail

Electronics

On/off	: Automatic when used. Soft start/stop. Overload protection.
--------	---

SWL	: 440 lbs, 550 lbs, 600 lbs
Battery	: 1 x 24 V NiMH, 2.1 Ah
Max charge time (rail)	: 2 hours
Max charge time (hand control)	: 3 hours

SWL	: 660 lbs, 770 lbs, 825 lbs, 880 lbs
Battery	: 2 x 24 V NiMH, 2.1 Ah
Max charge time (rail)	: 4 hours
Max charge time (hand control)	: 6 hours

Battery protection : At battery voltage below 22 V, the indicator light turns orange. The hoist stops if the voltage drops below 20 V

Power supply	: 33 V AC, 2.5 A
Supply voltage, transformer Class I	: 100-240V AC
transformer Class II	: 100-115V AC

Protection classification (IP) according to IEC 60529

Lifting module	: IP 20
Hand control	: IP 44
Remote control	: IP 20
Transformer Class I	: IP 20
Transformer Class II	: IP 21

Labelling

The product is manufactured in compliance with regulation (EU) 2017/745 of the European parliament and of the Council of 5 April 2017, as medical device Class I.

Classification

Pursuant to ISO 9999

Patents	: PA 2008 00888 PA 2008 00894 PA 2008 00895
---------	---

Time to care



GH3/GH3+ Lifting modules Technical specifications

GH Lifting modules, configurations			Options														
Guldmann hoist type	Lifting speed, inch/s (Normal / Turbo)	Load in lbs	Wi-Fi enabled	Data transmission shown on MyGuldmann	Hand control with display	Function on demand	Scale	Class III scale	Trainer	Coating	UL	Automatic charging	Charging in docking station	Positioning lock	IR remote ^{x)}	Horizontal drive motors ^{x)}	
GH3	1.6/3.9	440								•	•	✓	•	•	•	•	
		550								•	•	✓	•	•	•	•	
		605									•	•	✓	•	•	•	•
		660									•	•	✓	•	•	•	•
		770									•	•	✓	•	•	•	•
		825									•	•	✓	•	•	•	•
		880									•	•	✓	•	•	•	•
GH3+	2.4/3.9	440	✓	✓	✓	•	•	•	•	•	•	✓	•	•	•	•	
		550	✓	✓	✓	•	•	•	•	•	•	✓	•	•	•	•	
		605	✓	✓	✓	•	•	•	•	•	•	✓	•	•	•	•	
		660	✓	✓	✓	•	•	•	•	•	•	✓	•	•	•	•	
		770	✓	✓	✓	•	•	•	•	•	•	✓	•	•	•	•	
		825	✓	✓	✓	•	•	•	•	•	•	✓	•	•	•	•	
		880	✓	✓	✓	•	•	•	•	•	•	✓	•	•	•	•	

- *Optional*
- ✓ *Always included*
- x) *Not compatible with UL*

Lifting speed	GH3	GH3+
185 lbs load	1.6 inch/sec.	2.4 inch/sec.
330 lbs load	1.6 inch/sec.	2.4 inch/sec.
Max capacity load, SWL	1.6 inch/sec.	2.2 inch/sec.
Max 11 lbs load	1.6 / 3.9 inch/sec.	2.4 / 3.9 inch/sec.

Number of lift and Intermittent

Max. number of lift in series : 55 with 185 lbs/40"
 Max. charge time (rail) : 2 Hours
 Max. charge time (hand control) : 3 Hours
 Intermittent : 4 min. ON/16 min. OFF

SWL : 440 lbs, 550 lbs, 600 lbs
 Max. number of lifts in series : 21/40"
 Max. charge time (rail) : 2 Hours
 Max. charge time (hand control) : 3 Hours
 Intermittent : 2 min. ON/18 min. OFF

SWL : 660 lbs, 770 lbs, 825 lbs, 880 lbs
 Max. number of lifts in series : 40/40"
 Max. charge time (rail) : 4 Hours
 Max. charge time (hand control) : 6 Hours
 Intermittent : 2 min. ON/18 min. OFF